

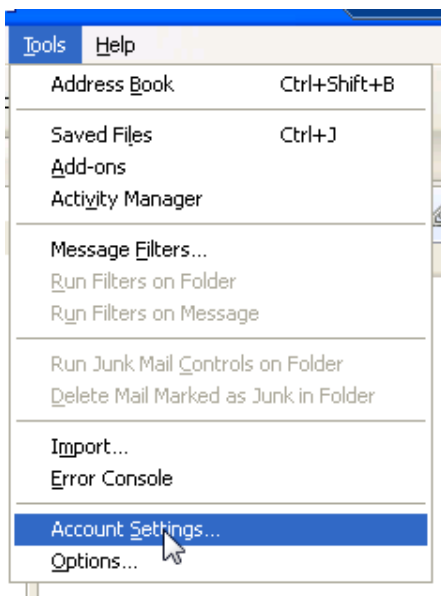
Routing your email through Impactia servers using POP3/IMAP accounts

with Mozilla Thunderbird – NO FIXED IP

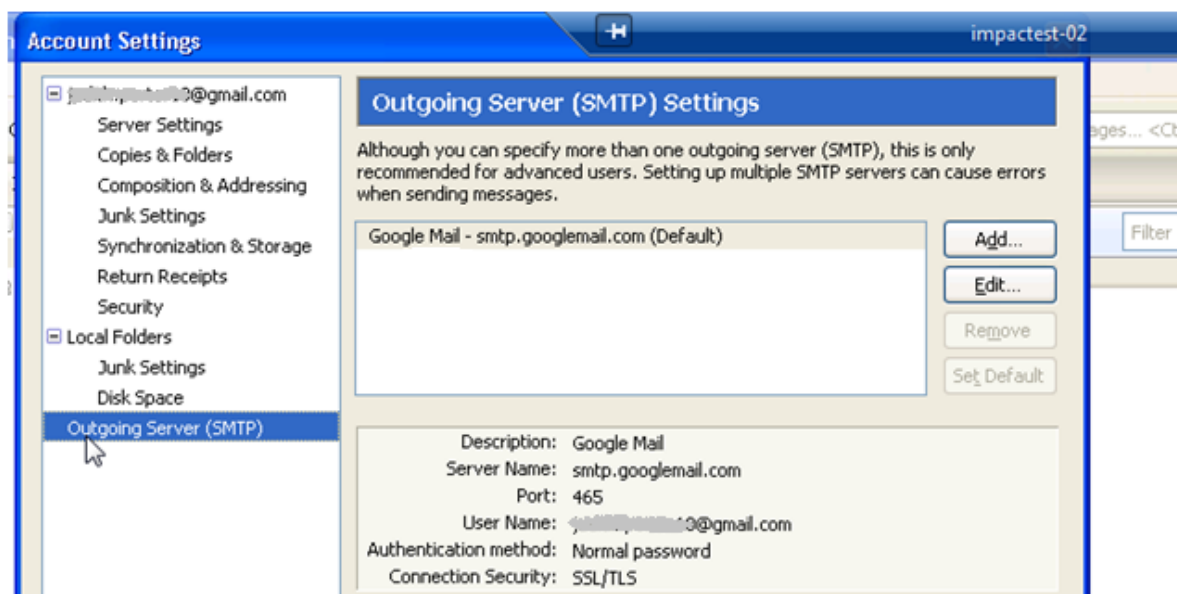
IMPORTANT! If you have SPF Records, please update them BEFORE routing, as explained [here](#).

In order to enrich your emails using POP3 or IMAP account, all you need to do is set your outgoing mail server to be *outx.impactia.com* and add the username and password you've been given.

Go to *Tools* option in the top menu bar and select *Account Settings*:



Click on *Outgoing Server (SMTP)* option in the left hand menu



Click *Add* to open *SMTP Server* dialog.

SMTP Server

Settings

Description: Impactia

Server Name: outx.impactia.com

Port: 587 Default: 25

Security and Authentication

Connection security: None

Authentication method: Password, transmitted insecurely

User Name: your-username

OK Cancel

Fill in the following details:

- A description in the *Description* field.
- **outx.impactia.com** in the *Server Name* field.
- **587** in the *Port* field.
- Select **None** in *Connection security* field.
- Select **Password, transmitted insecurely** in *Authentication method* field.
- Type your Impactia username in the *User Name* field.
(The password will be typed the first time you'll send an email through this account, see ahead).

Now set this to be the default outgoing server by clicking *Set Default*.

Account Settings

Outgoing Server (SMTP)

Outgoing Server (SMTP) Settings

Although you can specify more than one outgoing server (SMTP), this is only recommended for advanced users. Setting up multiple SMTP servers can cause errors when sending messages.

Google Mail - smtp.googlemail.com (Default)

Impactia - outx.impactia.com

Add...

Edit...

Remove

Set Default

Description: Impactia

Server Name: outx.impactia.com

Port: 587

User Name: your-username

Authentication method: Password, transmitted insecurely

Connection Security: None

When you'll first send an email using this account, you'll be prompted for a password. Type your Impactia password. Check the *Use Password Manager to remember this password* checkbox, so you won't be prompted again.

