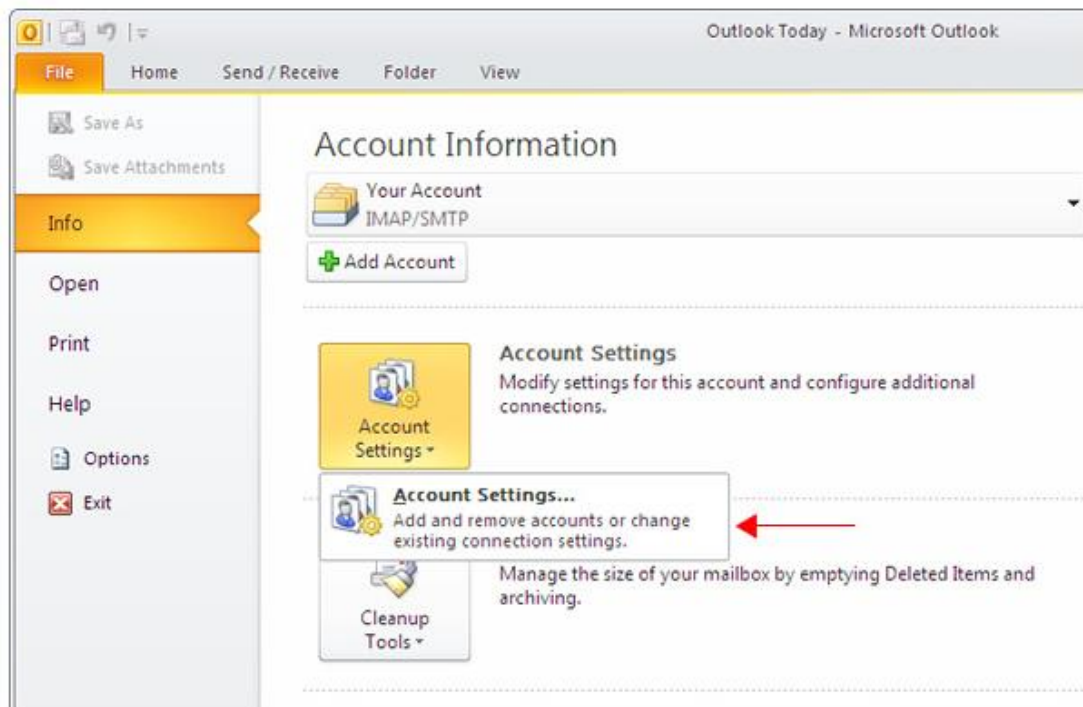


Routing your email through Impactia servers using POP3/IMAP accounts  
on Microsoft Outlook 2010 with username and password.

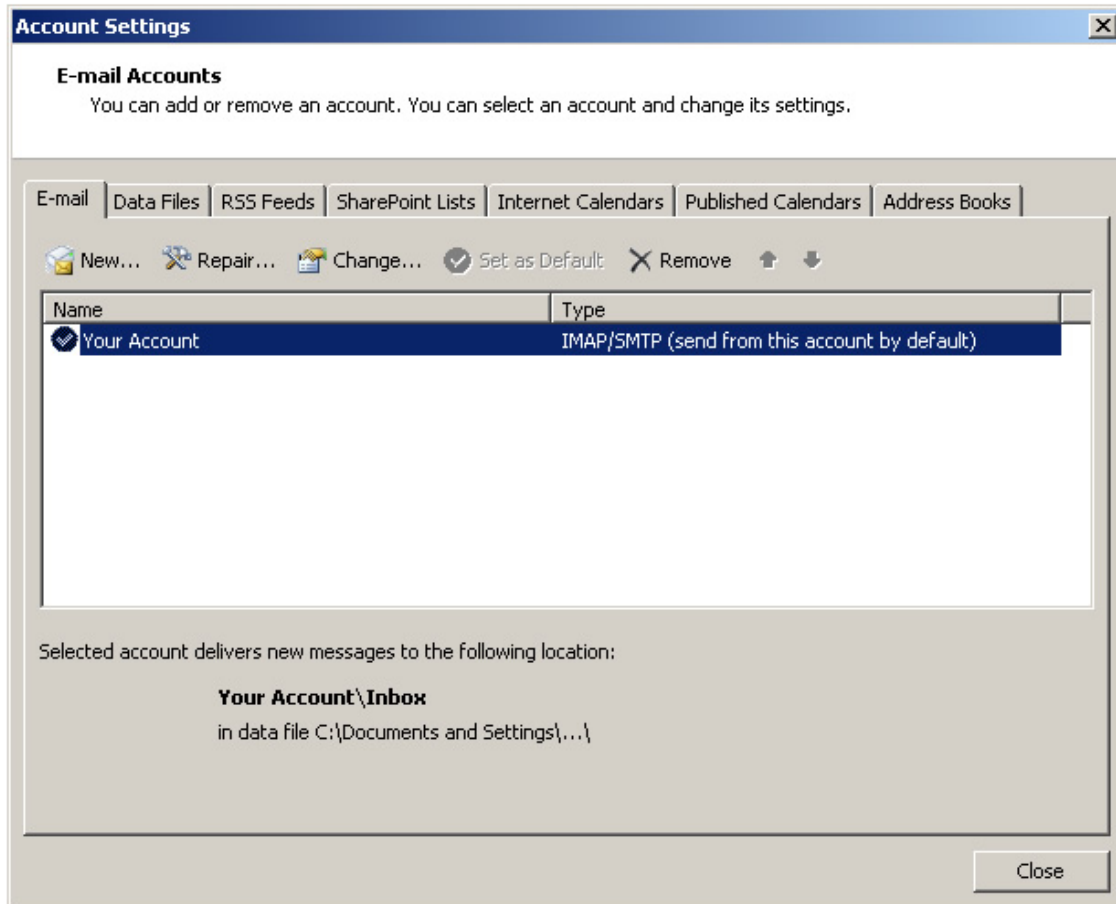
**IMPORTANT!** If you have SPF Records, please update them BEFORE routing, as explained [here](#).

In order to enrich your emails using POP3 or IMAP account configured on Microsoft Outlook 2010, all you need to do is set your outgoing mail server to be *outx.impactia.com* and add the username and password you've been given.

Go to *File Tab* > Info Section > Click on Account Settings



Select your e-mail account from the list > click the "Change" button.



Change the *Outgoing mail server (SMTP)* field to **outx.impactia.com**:

**Change Account**

**Internet E-mail Settings**  
Each of these settings are required to get your e-mail account working.

**User Information**  
Your Name:   
E-mail Address:

**Server Information**  
Account Type:   
Incoming mail server:   
Outgoing mail server (SMTP):  ←

**Logon Information**  
User Name:   
Password:   
 Remember password  
 Require logon using Secure Password Authentication (SPA)

**Test Account Settings**  
After filling out the information on this screen, we recommend you test your account by clicking the button below. (Requires network connection)  
  
 Test Account Settings by clicking the Next button

Open the *More Settings* window:

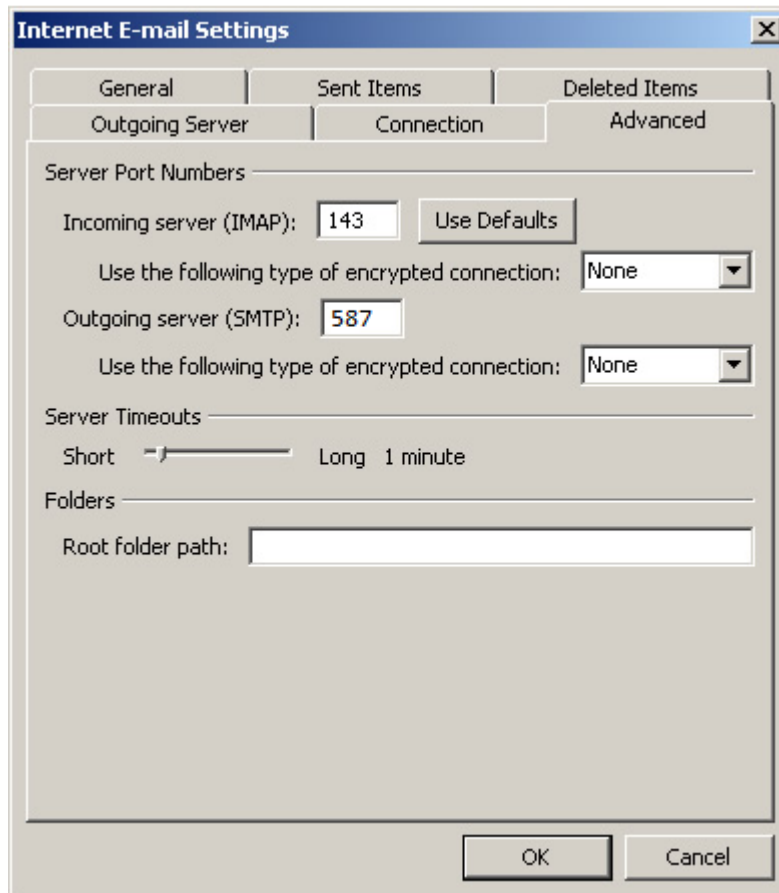
- In the *Outgoing Server* tab, check the *My outgoing server (SMTP) requires authentication* checkbox.
- Select the *Log on using* radio button, and type the username and password you've been given:
- Tick the Remember password option

**Internet E-mail Settings**

General | Sent Items | Deleted Items  
Outgoing Server | Connection | Advanced

My outgoing server (SMTP) requires authentication  
 Use same settings as my incoming mail server  
 Log on using  
User Name:   
Password:   
 Remember password  
 Require Secure Password Authentication (SPA)

- In the *Advanced* tab, change the *Outgoing server (SMTP)* field value to **587**. Also, make sure that "Use the following type of encrypted connection: is sent as *None*.



- Click OK > Click the Next button.
- In the next window click 'Finish'
- In the 'Account Settings' window click 'Close'